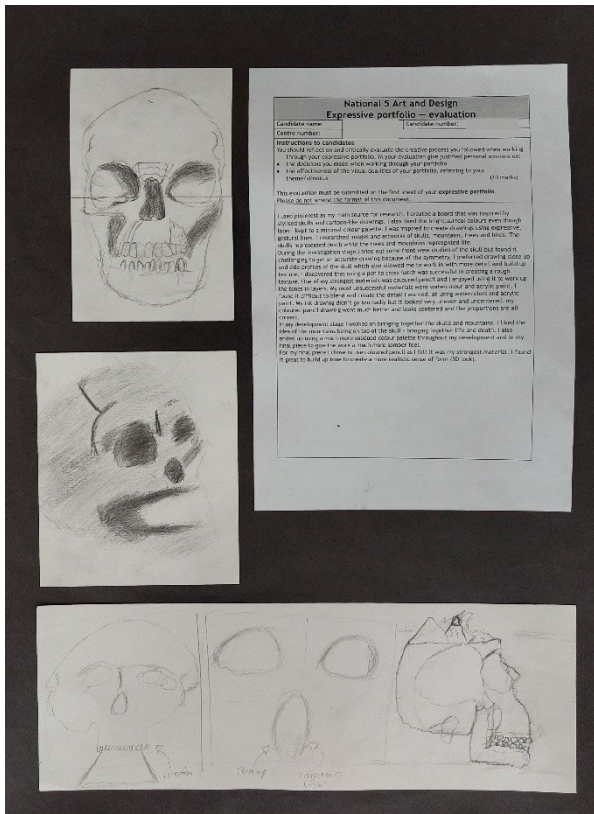
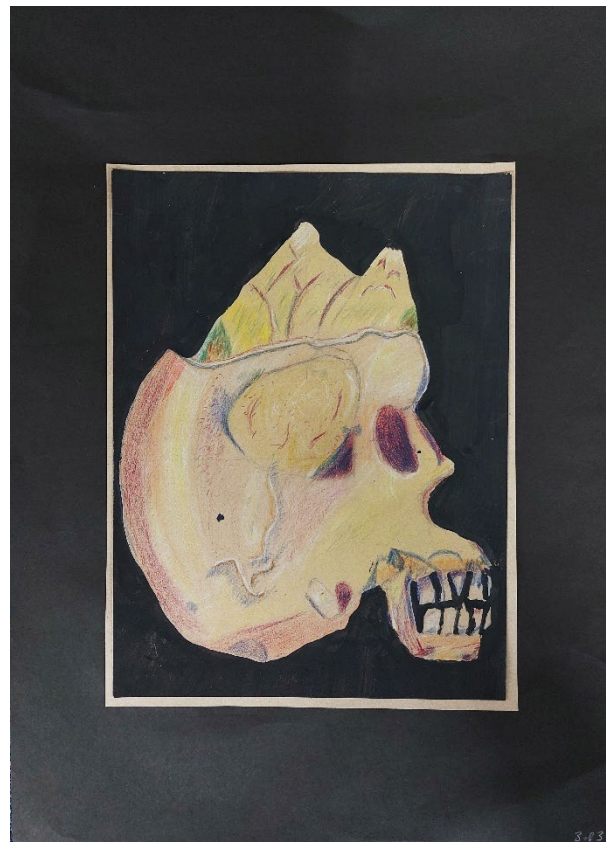
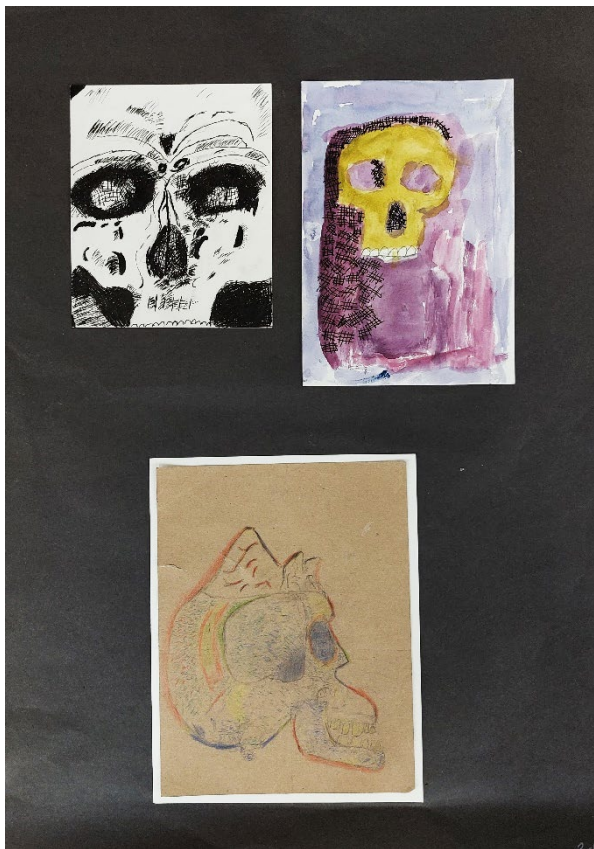


Candidate 6 Skull



Process	10/10
	8/30
Skills	6/25
	6/25
Sub-total	30/90
Evaluation	3/10
TOTAL	33/100



National 5 Art and Design Evaluation		Expressive portfolio	
Candidate name:		Candidate number:	
Centre number:			
Instructions to candidates			
<p>You should reflect on and evaluate the creative process you followed when working through your Expressive portfolio. In your evaluation give justified personal opinions on:</p> <ul style="list-style-type: none"> ◆ the decisions you made when working through your Portfolio; ◆ the effectiveness of the visual qualities of your Portfolio, referring to your theme/stimulus. <p style="text-align: right;">(10 marks)</p>			
<p>I used pinterest as my main source for research. I created a board that was inspired by stylised skulls and cartoon-like drawings. I also liked the bright, surreal colours even though later I kept to a minimal colour palette. I was inspired to create drawings using expressive, gestural lines. I researched images and artworks of skulls, mountains, trees and birds. The skulls represented death which the trees and mountains represented life.</p> <p>During the investigation stage I tried out some front view studies of the skull but found it challenging to get an accurate drawing because of the symmetry. I preferred drawing close up and side profiles of the skull which also allowed me to work in with more detail and build up texture. I discovered that using a pen to cross hatch was successful in creating a rough texture. One of my strongest materials was coloured pencil and I enjoyed using it to work up the tone in layers. My most unsuccessful materials were watercolours and acrylic paint, I found it difficult to blend and create the detail I wanted. At using watercolour and acrylic paint. My ink drawing didn't go too badly but it looked very uneven and uncentred. My coloured pencil drawing went much better and looks centred and the proportions are all correct.</p> <p>In my development stage I worked on bringing together the skulls and mountains. I liked the idea of mountains being on top of the skull - bringing together life and death. I also ended up using a much more subdued colour palette throughout my development and in my final piece to give the work a much more sombre feel.</p> <p>For my final piece I chose to use coloured pencil as I felt it was my strongest material. I found it great to build up tone to create a more realistic sense of form (3D look).</p>			

Candidate 6 - Skull

Section 1 - Expressive Portfolio - Process

This portfolio shows highly relevant investigative research.

The candidate has presented several investigative skull studies on the first sheet. These studies are appropriate investigative research linking to the 'Skull' theme. The work is highly relevant and was awarded full marks.

This aspect was awarded 10 of the 10 marks available.

This portfolio shows partially effective development and refinement of one idea leading to the production of a final piece.

A single line of development is shown with the continued use of the skull and the addition of landscape in a development study and the final piece. The process from development through to the final piece lacks effective refinement of the idea and is somewhat disjointed. This was judged to be at the bottom of the partially effective range.

This aspect was awarded 8 of the 30 marks available.

Section 2 - Expressive Portfolio - Skills

This portfolio shows partially effective use of appropriate materials, techniques and/or technology in response to their theme.

The candidate has used both dry and wet media with a range of techniques. This portfolio shows a simplistic use of materials and techniques that does not meet the standard for this level. This was judged to be at the top of the limited range.

This aspect was awarded 6 of the 25 marks available.

This portfolio shows limited use of visual elements and expressive effects in response to their theme. The candidate has not demonstrated effective use of visual elements and expressive effects for this level. The use of line and shape is simplistic, and the addition of tone is basic across the portfolio giving a limited sense of form. Effective composition has not really been understood with simplistic consideration of viewpoints. This does not meet the standard required for this level and was judged to be at the top of the limited range.

This aspect was awarded 6 of the 25 marks available.

Section 3 - Expressive Portfolio - Evaluation

This expressive evaluation shows personal opinion expressed showing simple justification and/or critical evaluation of the decisions made and the effectiveness of the visual qualities of their portfolio.

The candidate has discussed the portfolio in a simplistic manner, commenting on subject matter, materials, techniques, and appropriate visual elements. At times, statements lack detail, there are some personal opinions, but they are not always justified. Overall, there is a lack of critical evaluation, and this evaluation was judged to be at the bottom of the simple justification range.

This evaluation was awarded 3 of the 10 marks available.

Total: 33 marks